

# Kermit 95 SSH Installation Instructions

Kermit 95 is a licensed product, not free software, and its use with WordStock is licensed as well.

- If you're installing Kermit 95 on a computer which is replacing an existing computer or reinstalling it after a problem with an existing computer, this doesn't change your licensing, and there is no extra charge.
- If you're adding a new workstation or setting up a connection from home, this may change your licensing.
- *Contact WordStock's sales department to determine how you're currently licensed and whether you need additional licenses.*
- Unauthorized additional connections can degrade your system's performance and may result in additional charges.

Before installing Kermit 95, you need to know the following:

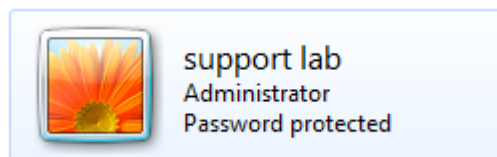
- The IP address of the WordStock main computer;
- Whether to use Telnet or SSH to connect to WordStock;
- What user ID and password to use for the connection;
- If you're downloading Kermit from our web site, you'll also need to know the user ID and password needed to access that download. *WordStock support can provide this information.*

If you're replacing an existing Kermit installation, you can generally use the same settings as were on the old computer, though switching from Telnet connections to SSH provides added security, especially for registers or connections from outside the store.

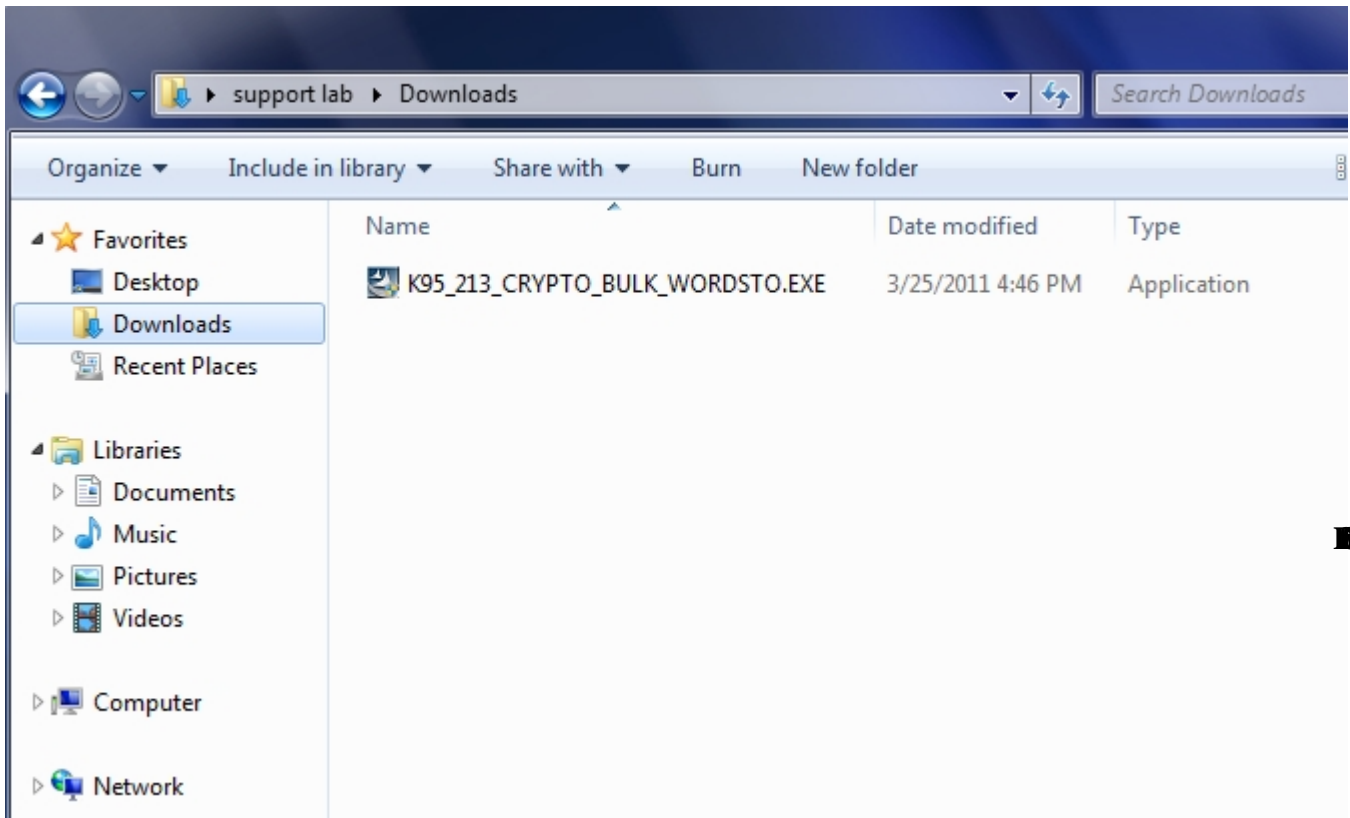
To install Kermit on a computer, go to that computer and download Kermit 95 from the link (details go here). You'll be prompted for a user ID and password before the install starts

- You should install Kermit logged into Windows with an account with *administrator* status.

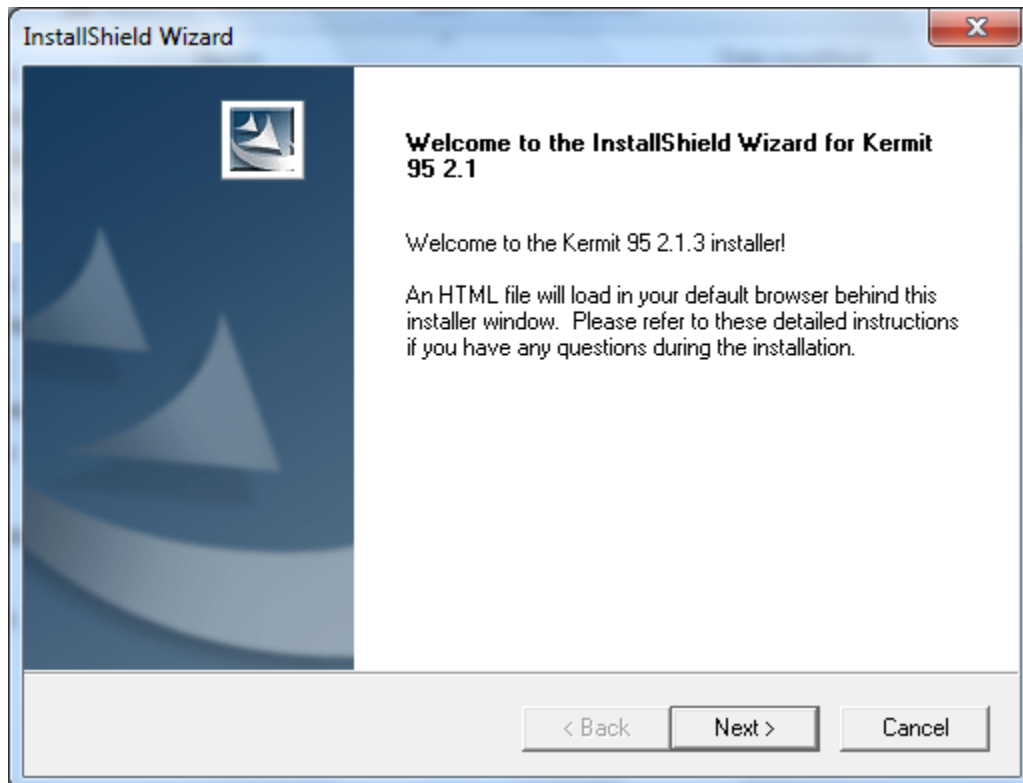
An administrator account should look somewhat like this in the 'User Accounts' section of the **Windows Control Panel**:

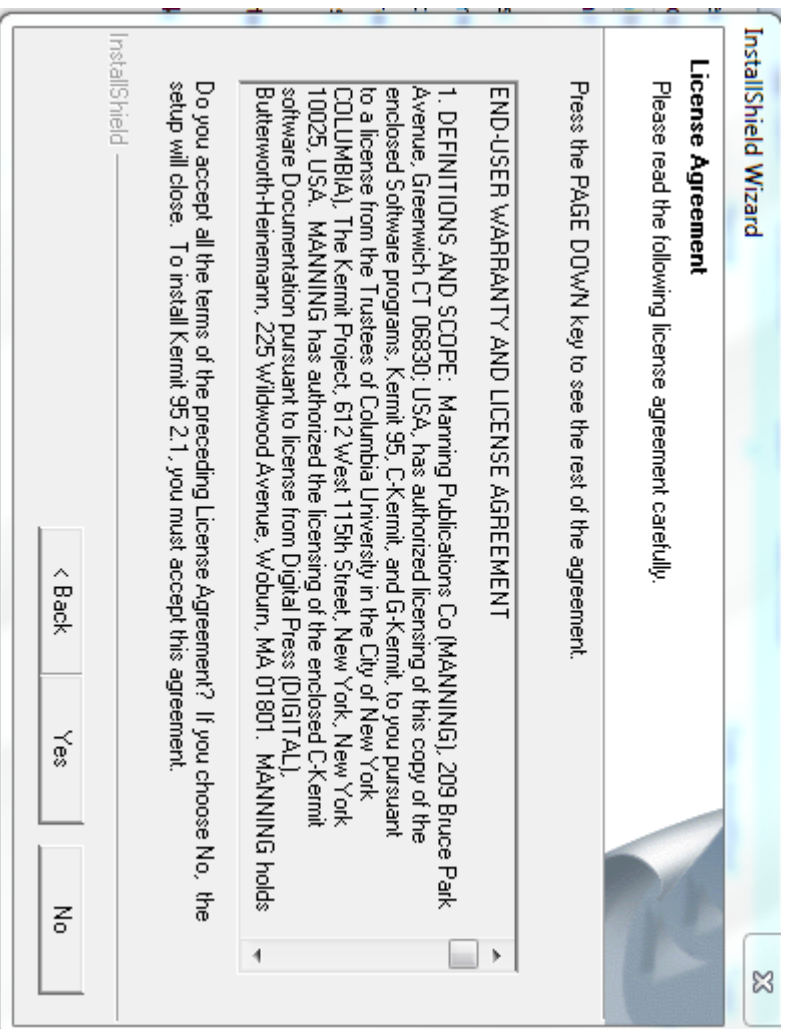


Once you've downloaded the file, double-click on the downloaded file to start the install.

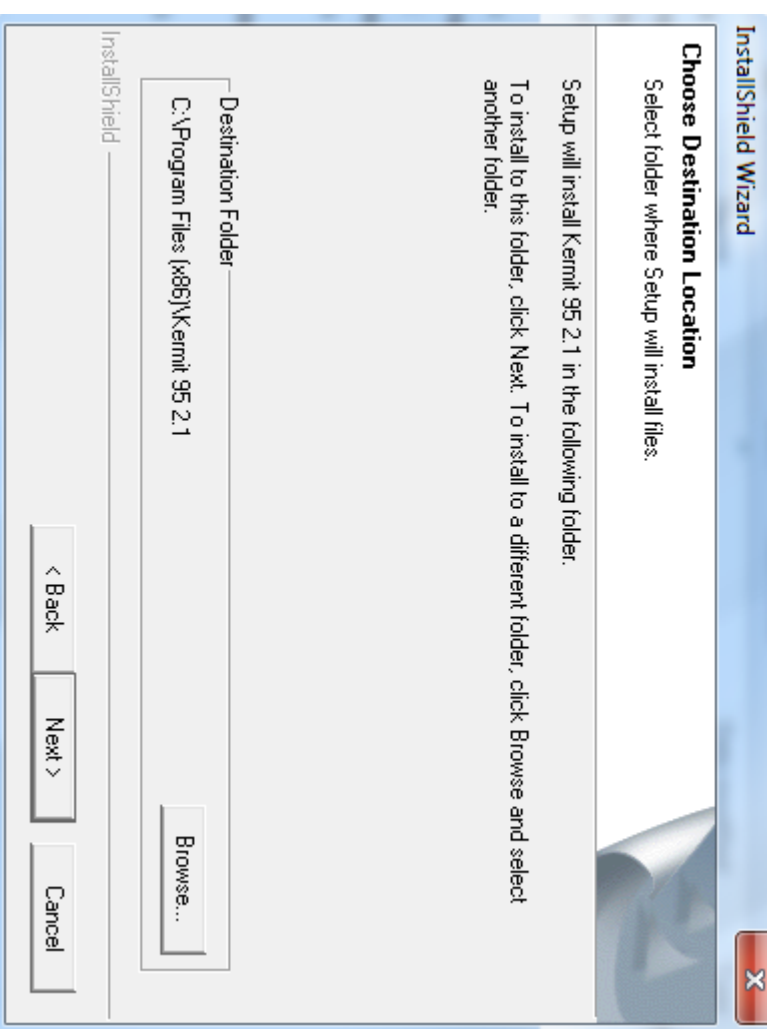


A web page may pop up and cover the install program. If it does, close it.

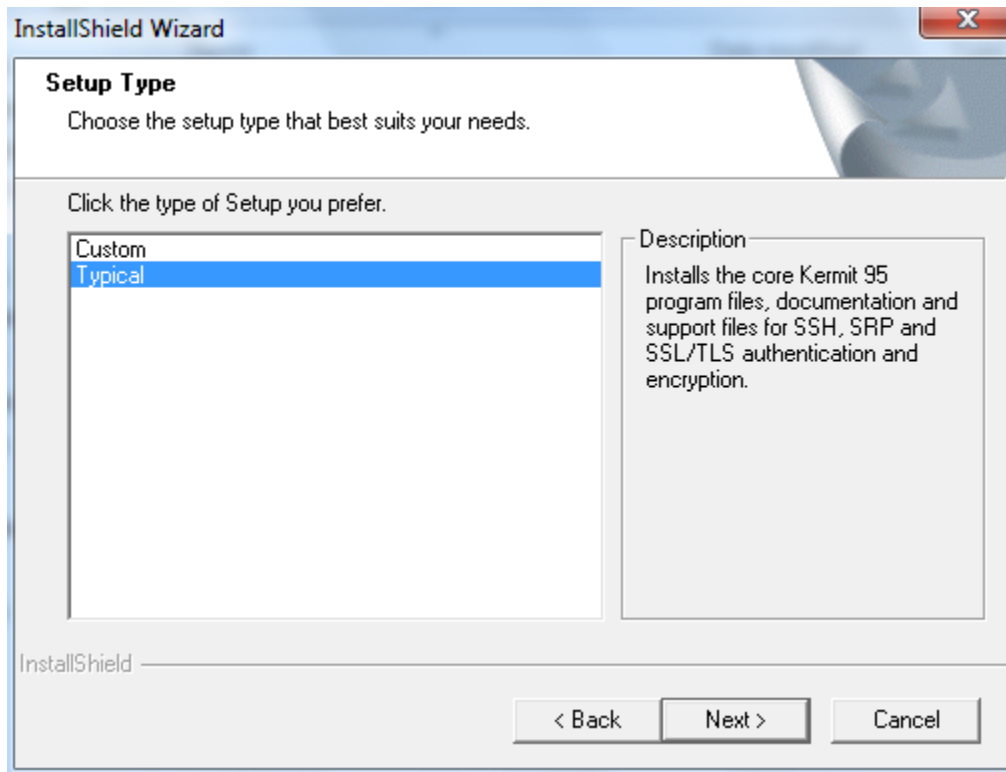




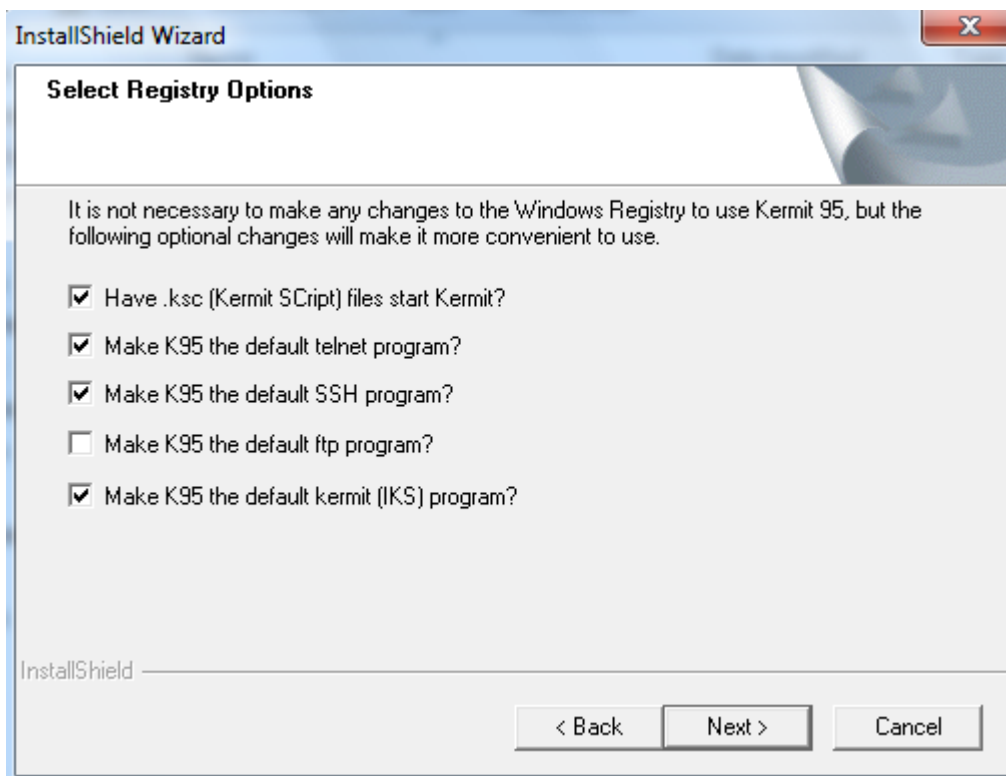
Use the default directory



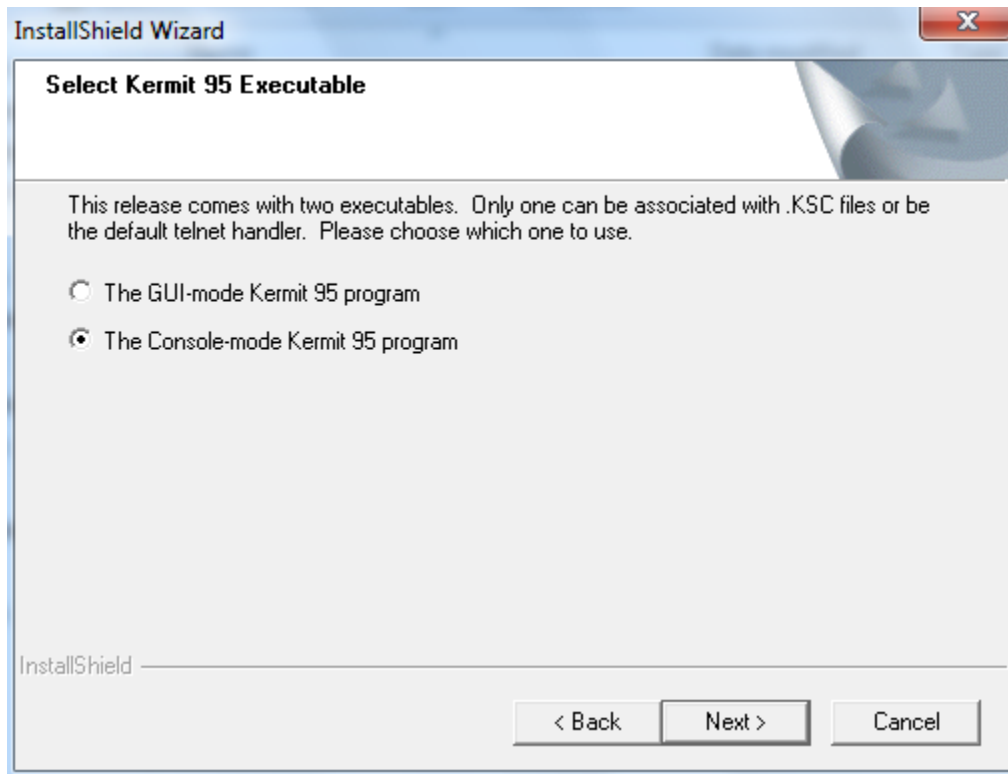
Choose a 'typical' installation



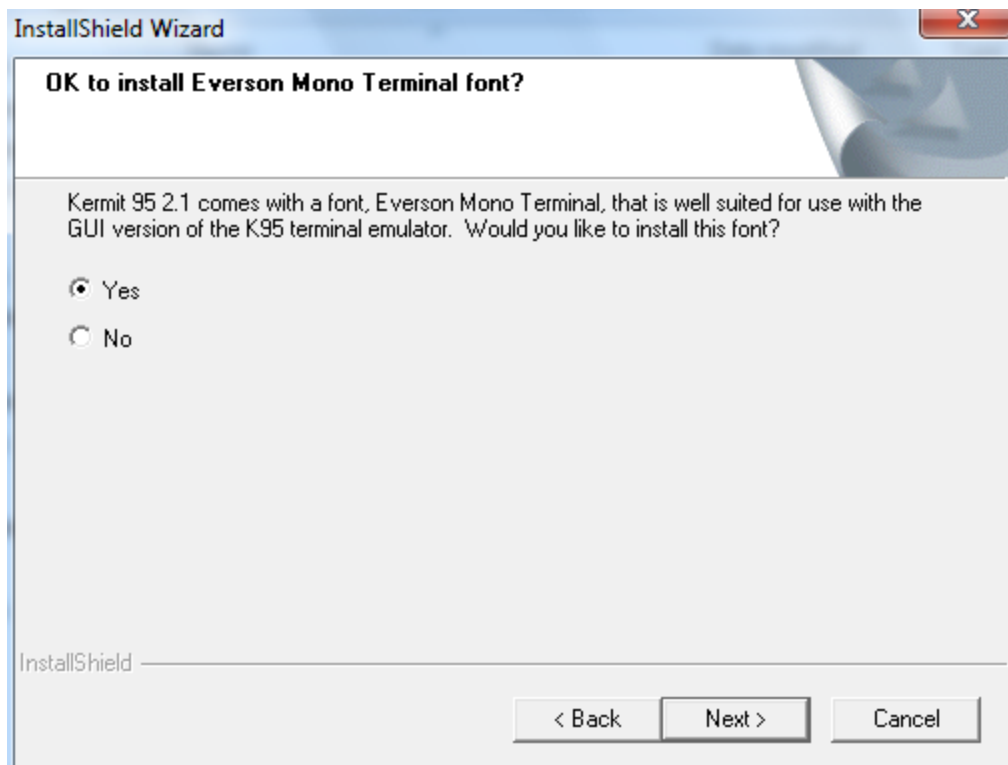
Accept the selected 'Registry' options



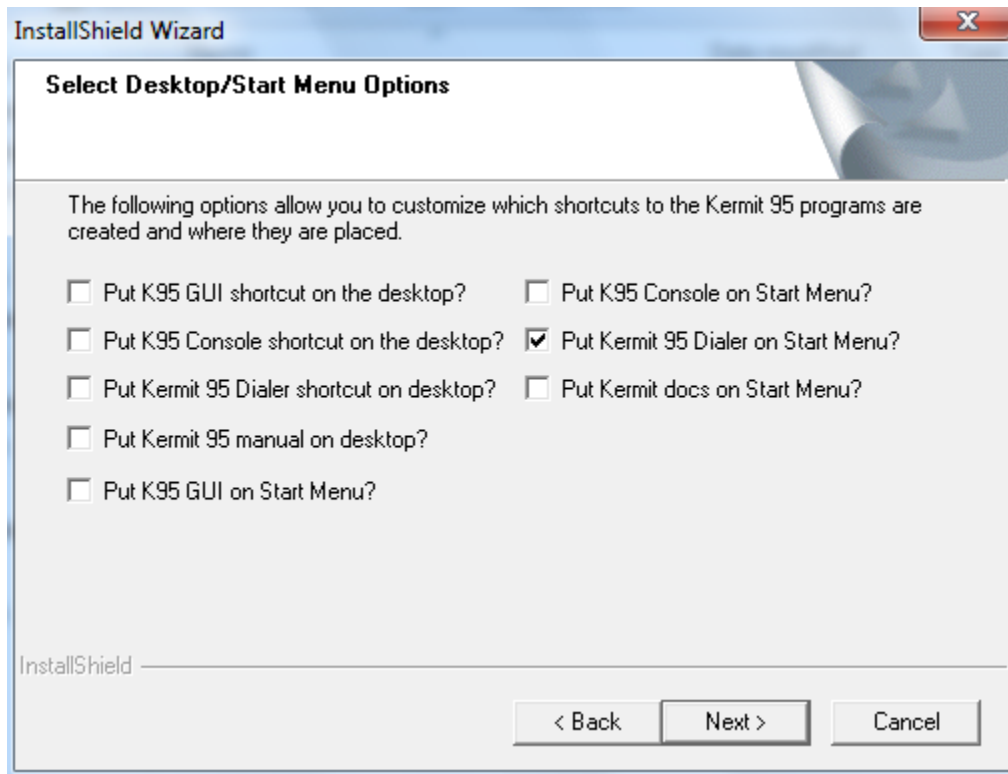
Make the 'console mode' the default.



Install the new font (optional)

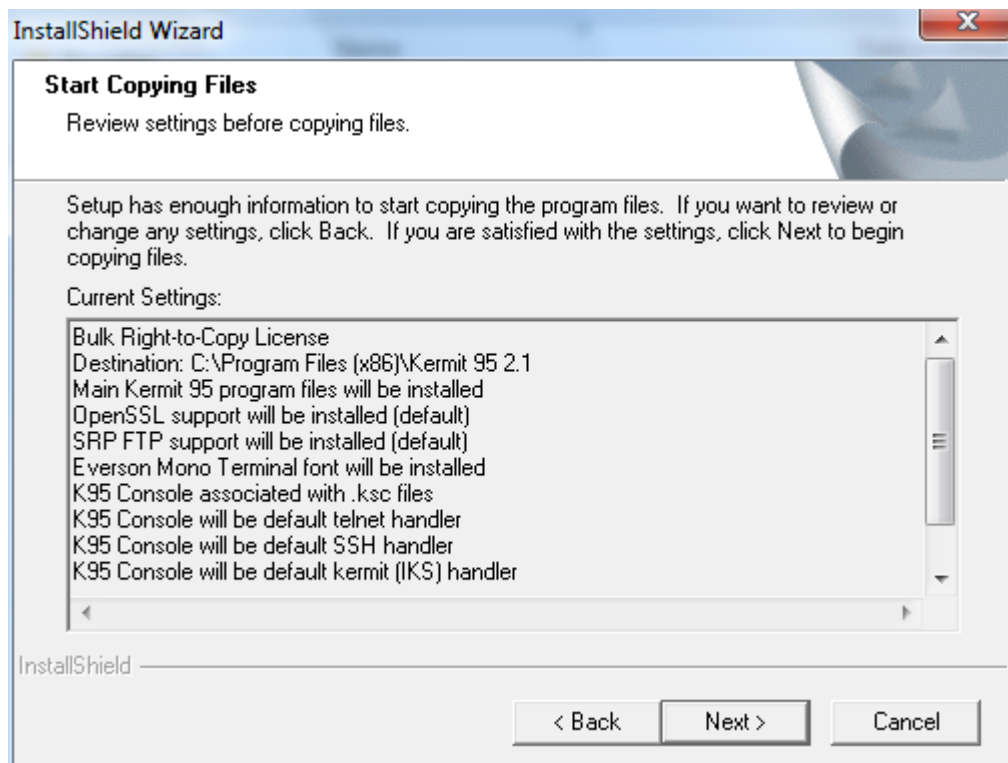


In the 'Desktop/Start Menu' options, uncheck everything except 'Put Kermit 95 Dialer on Start Menu'

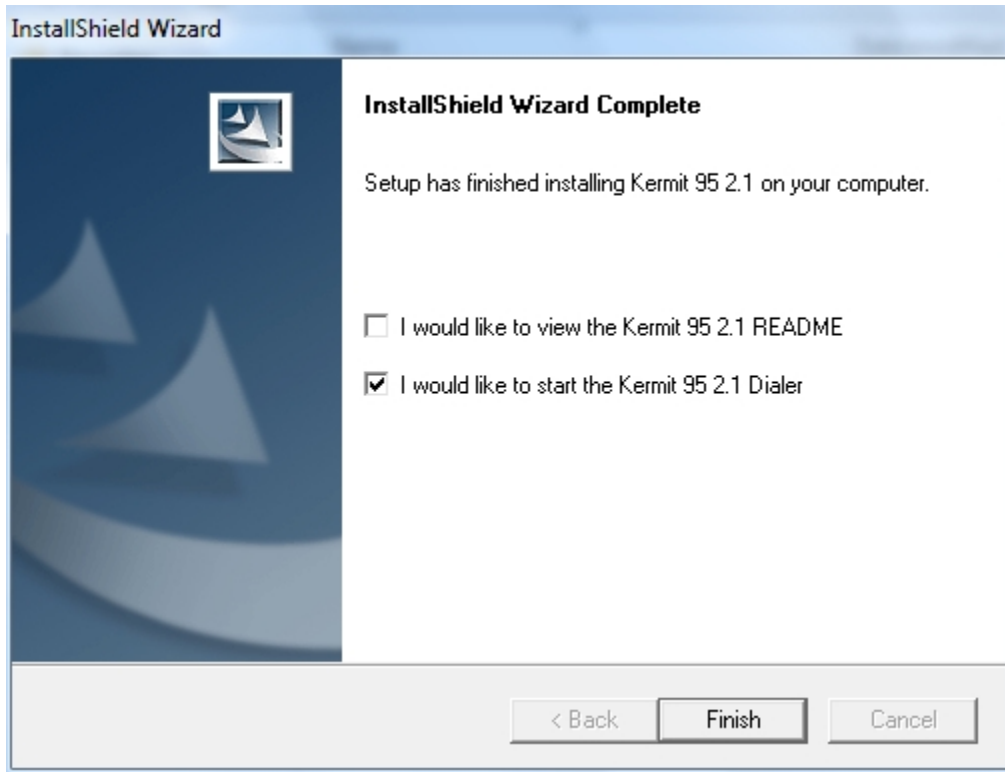


Make the program available for **all users**.

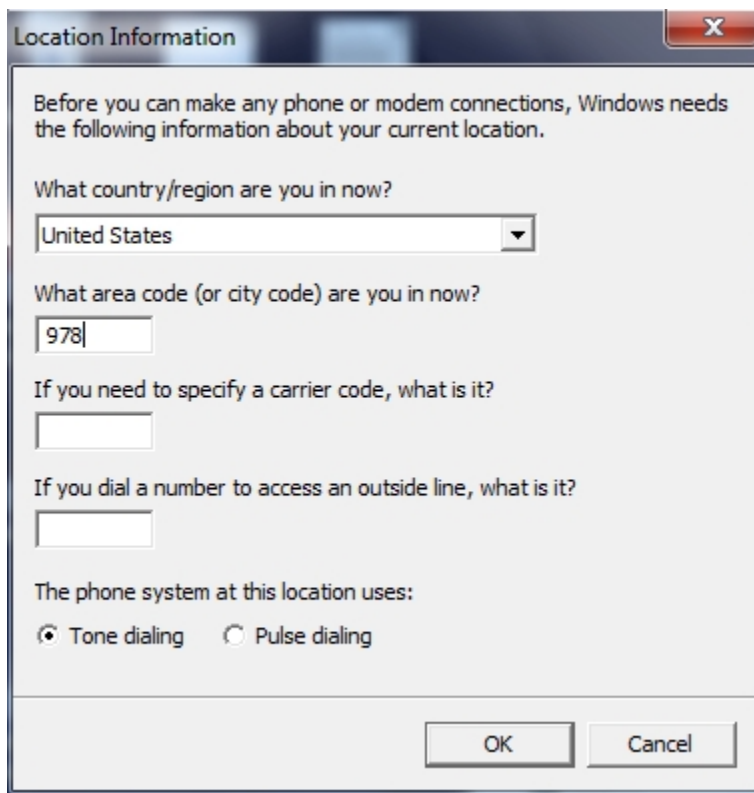
The program will install.

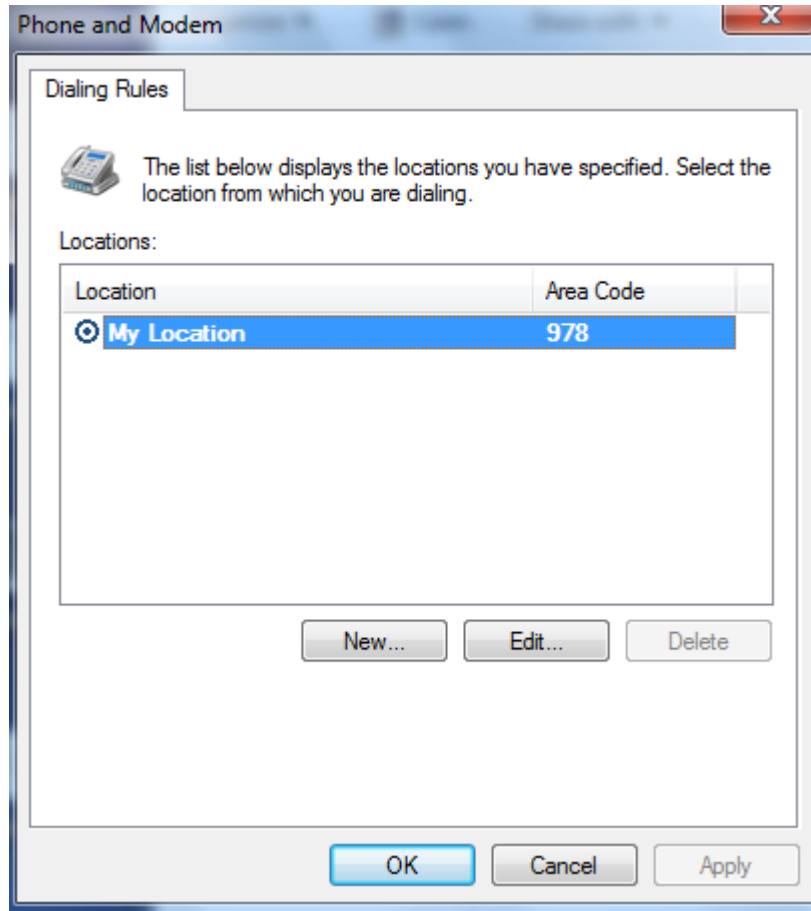


When it's finished, start the Kermit 95 dialer

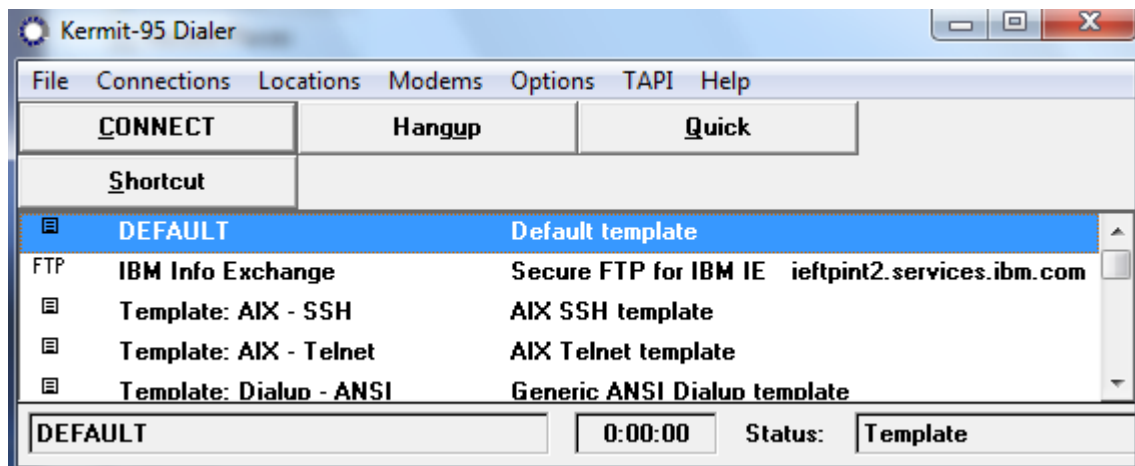


You may be prompted to enter some telephone dialing settings for your location. If you're asked to do this, enter your area code, click 'OK', then click 'OK' for 'My Location'. This is a Windows setting that does not actually affect anything.

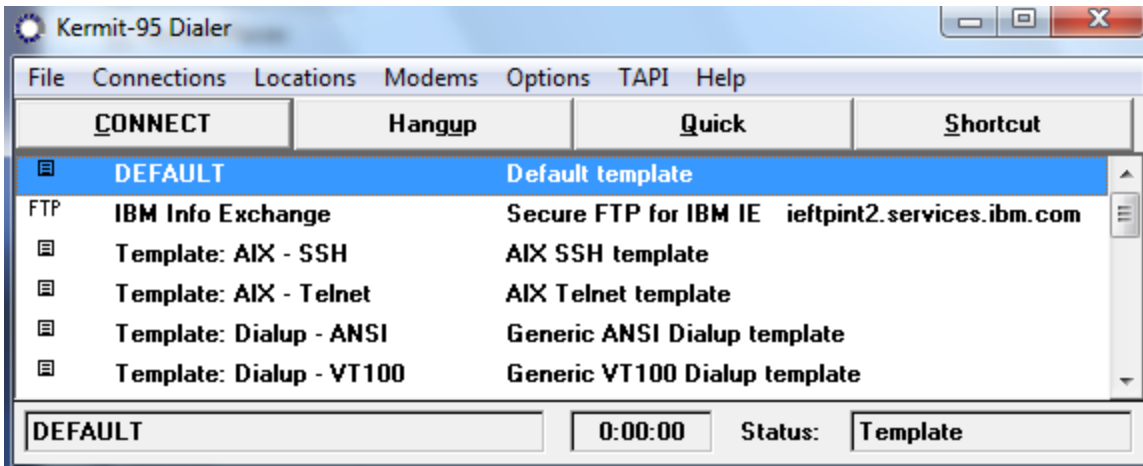




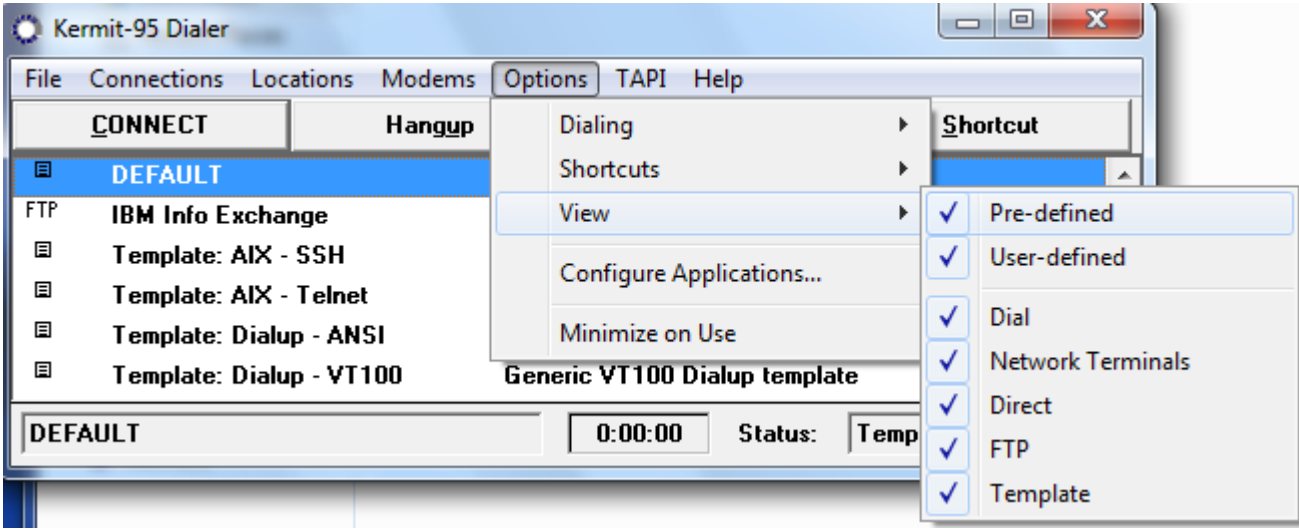
In Windows 7 and Windows Vista, the dialer screen may be sized incorrectly. To fix this, just drag the right side of the dialer to a larger size, where 'Shortcut' is located to the right of 'Quick'.



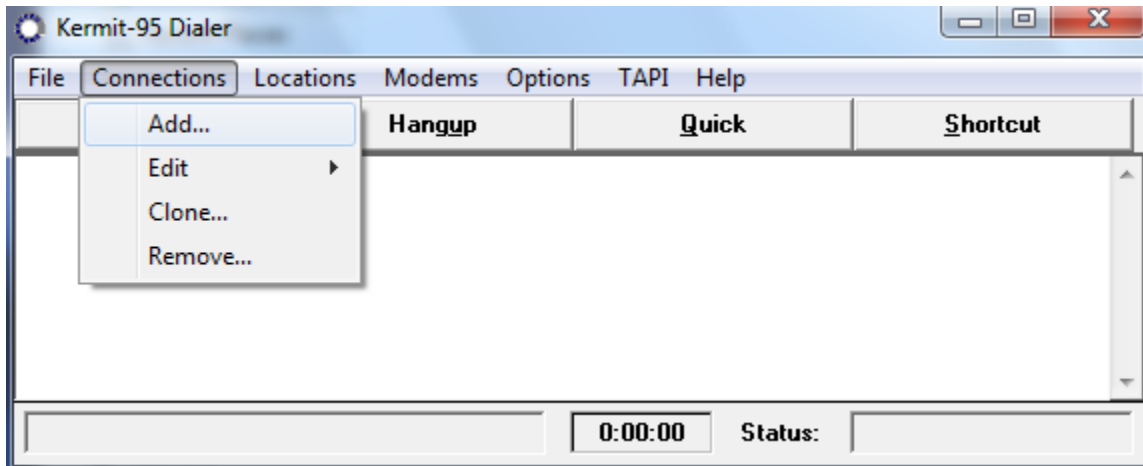




In the Kermit dialer, go into 'Options' > 'View' and uncheck 'Pre-defined'. There should now be no entries in the dialer.



Click on 'Connections' > 'Add'



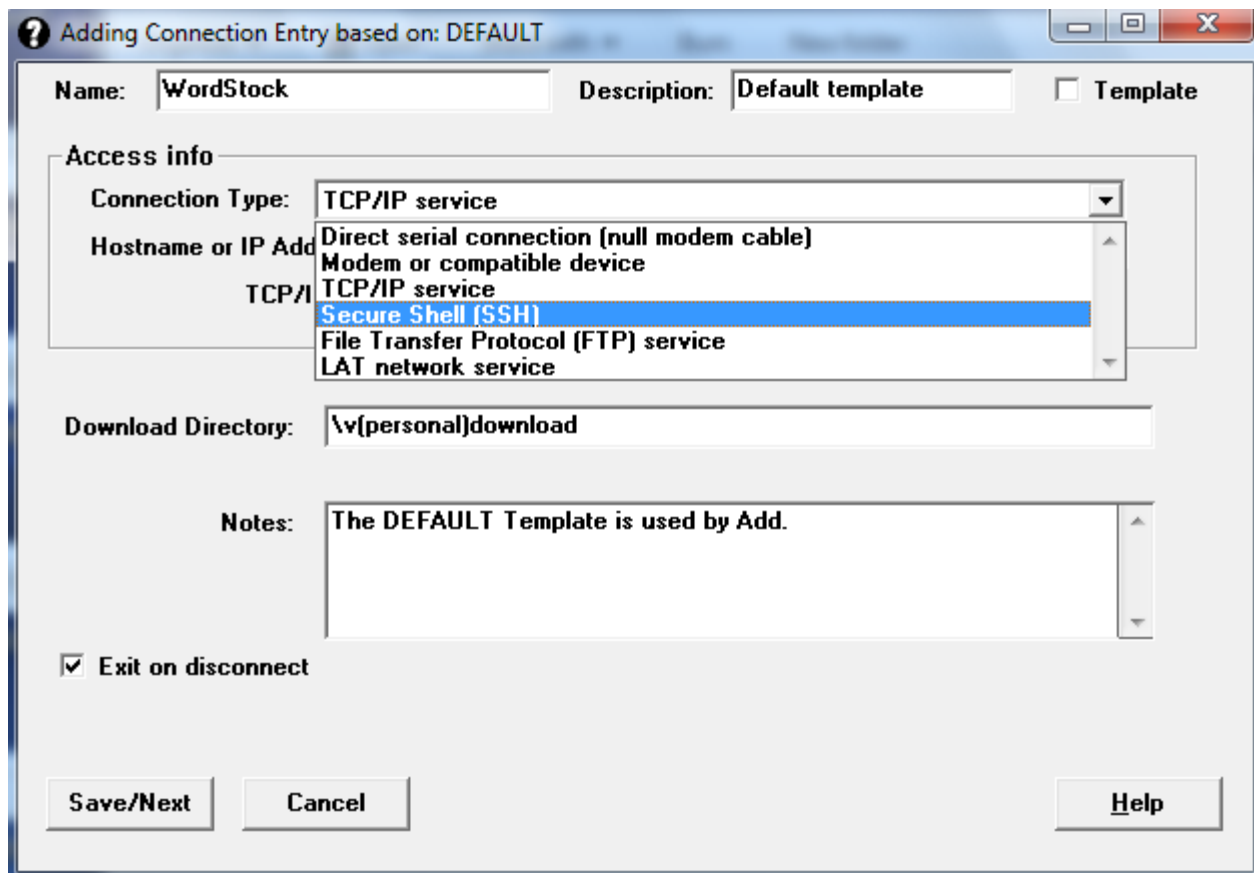
It is only necessary to change the entries noted below from the defaults. Everything else can be left as it is. There is no need to make any changes on most of the screens.

### General Settings:

Name: **WordStock** (or whatever is informative)  
Connection type: **Secure Shell (SSH)** (or TCP/IP service if Telnet is used)

Enter the IP address of the WordStock computer. (WordsStock support can supply this number)

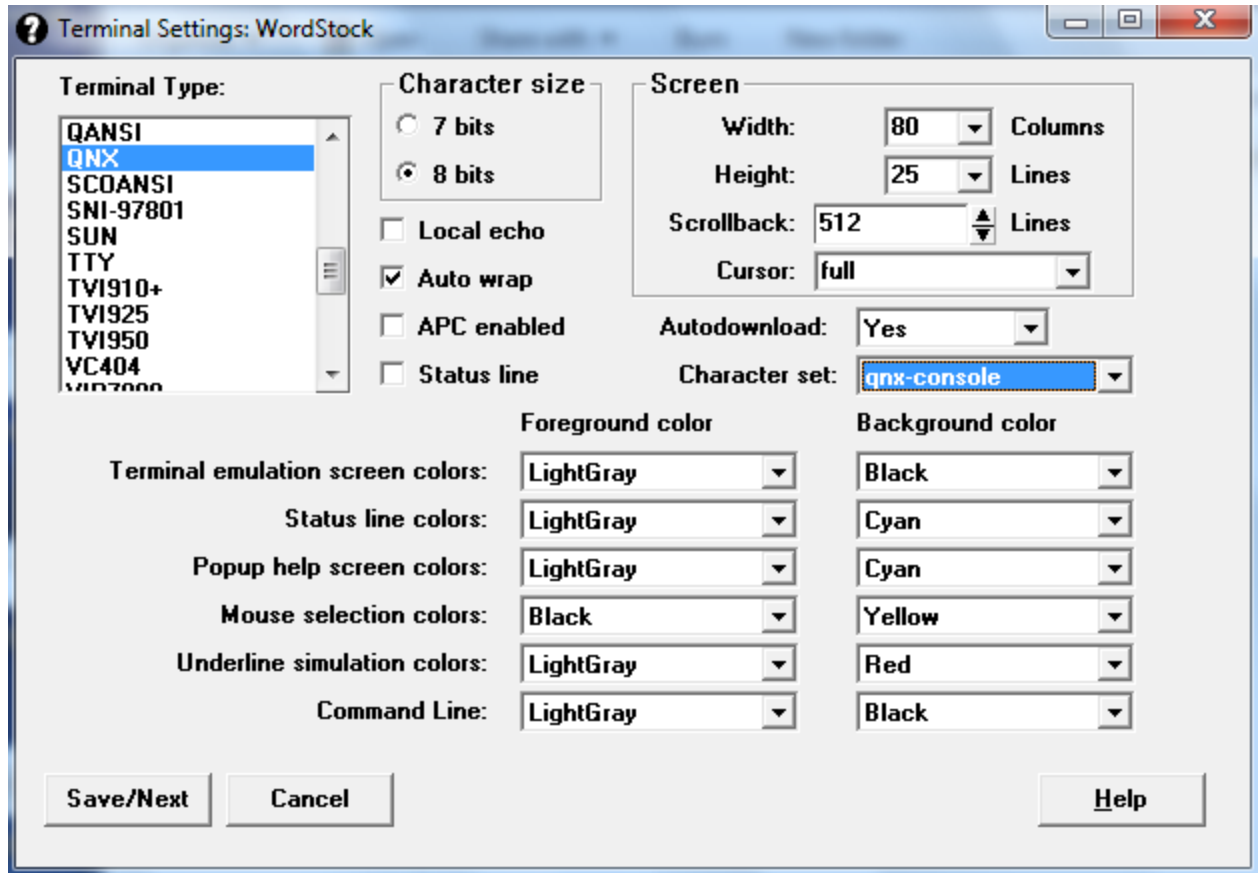
Click 'Save/Next'



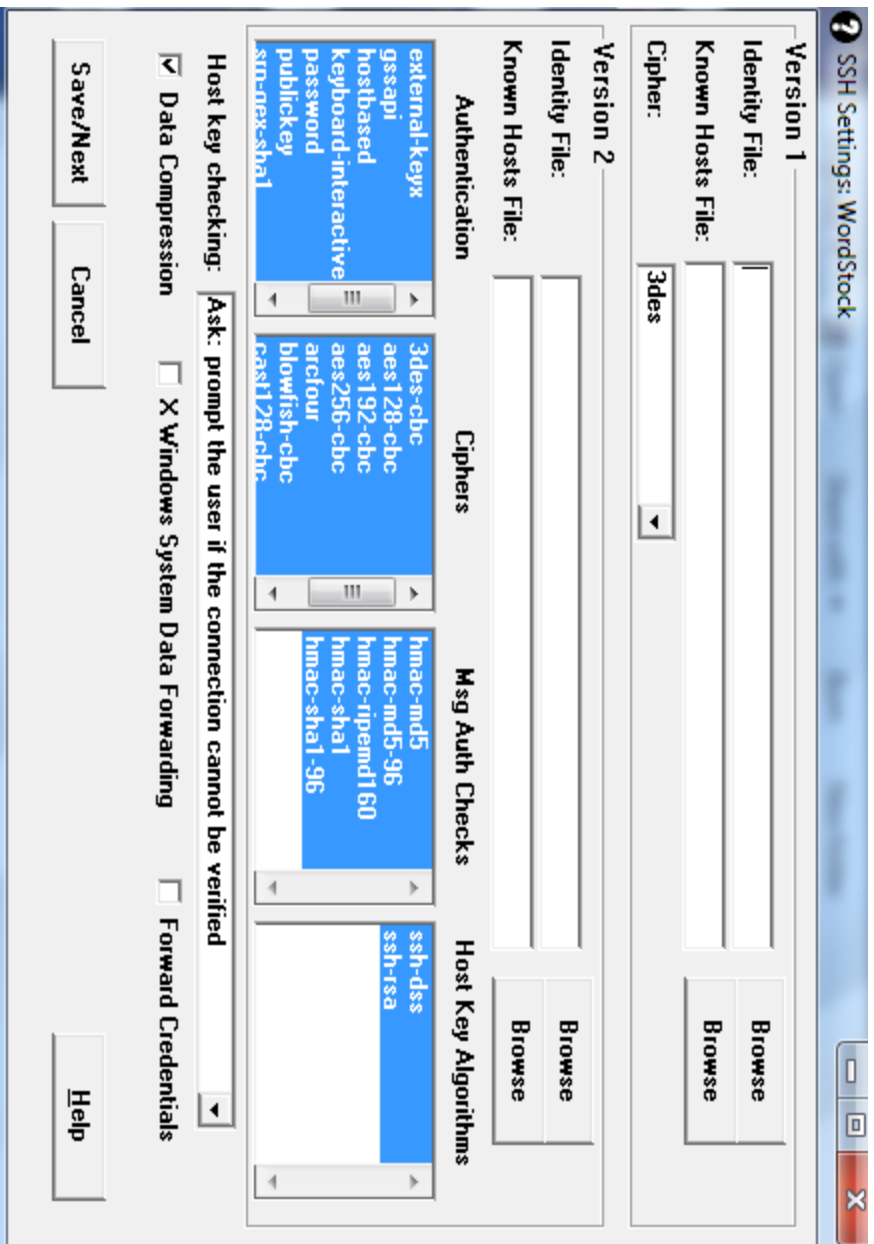
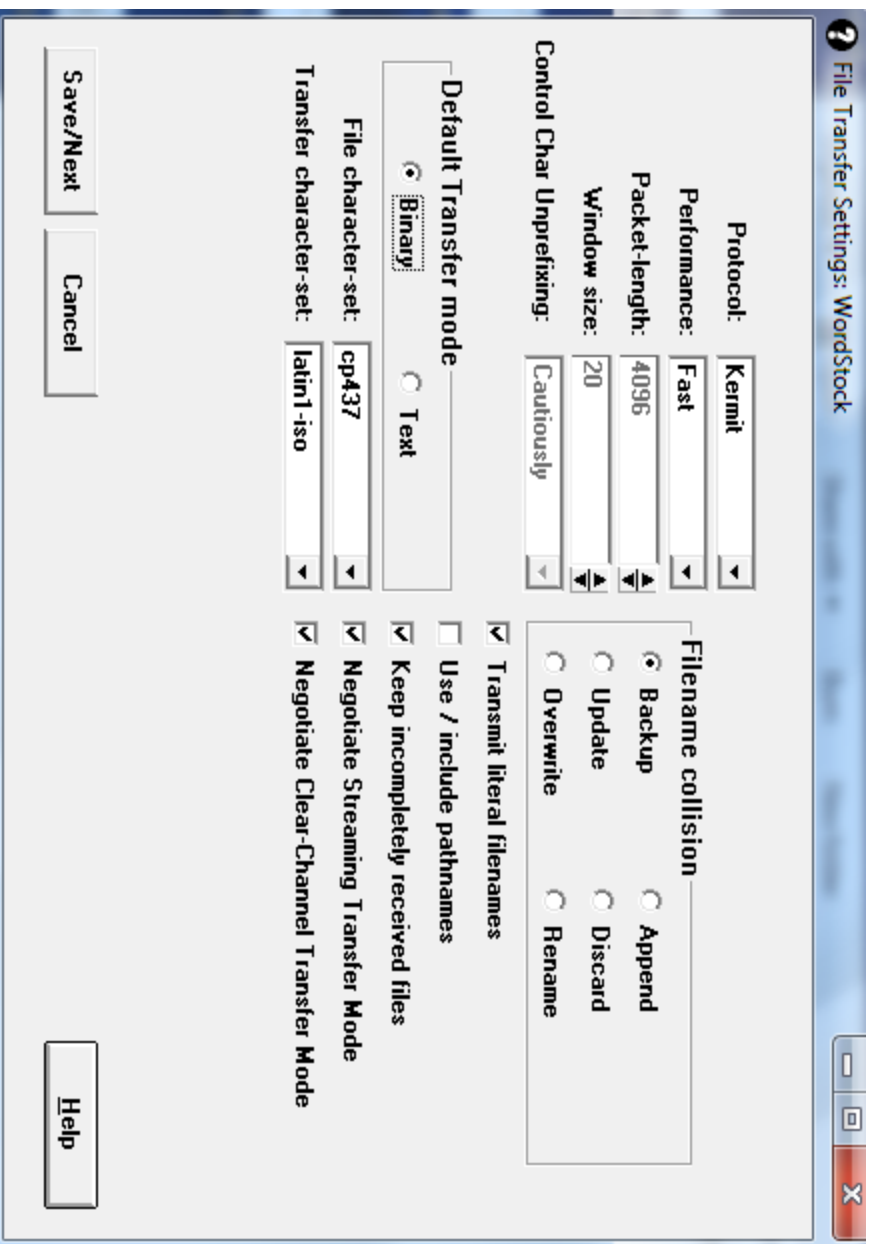
## Terminal Settings:

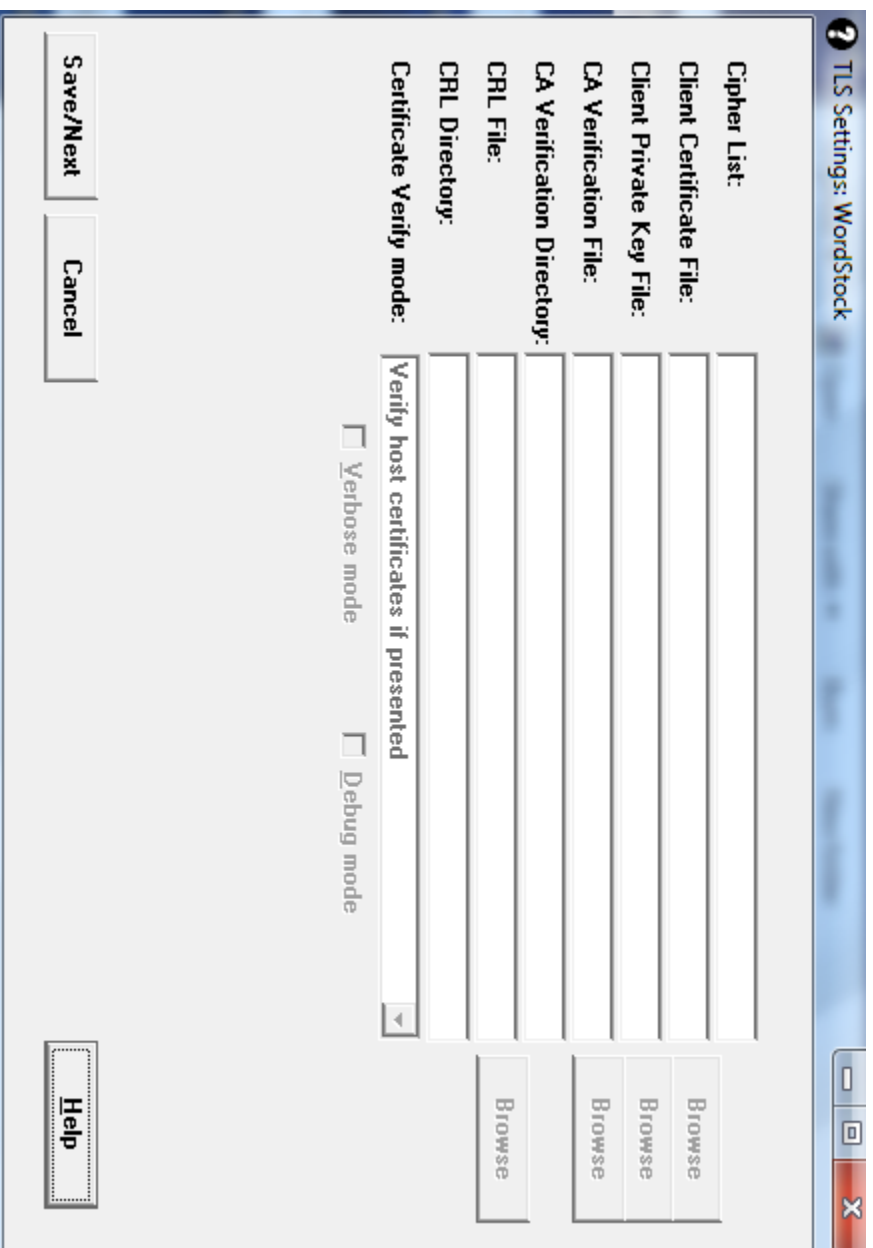
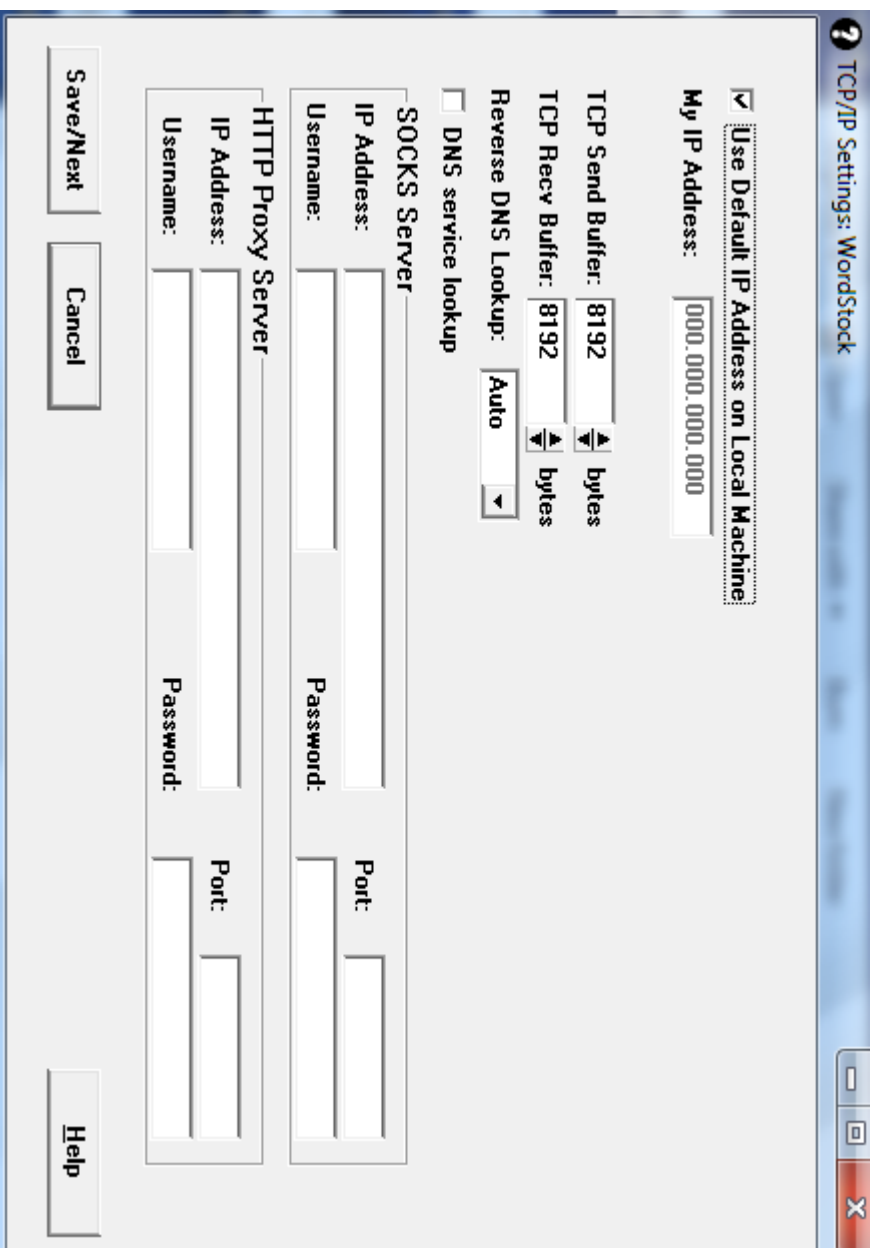
Terminal Type: QNX

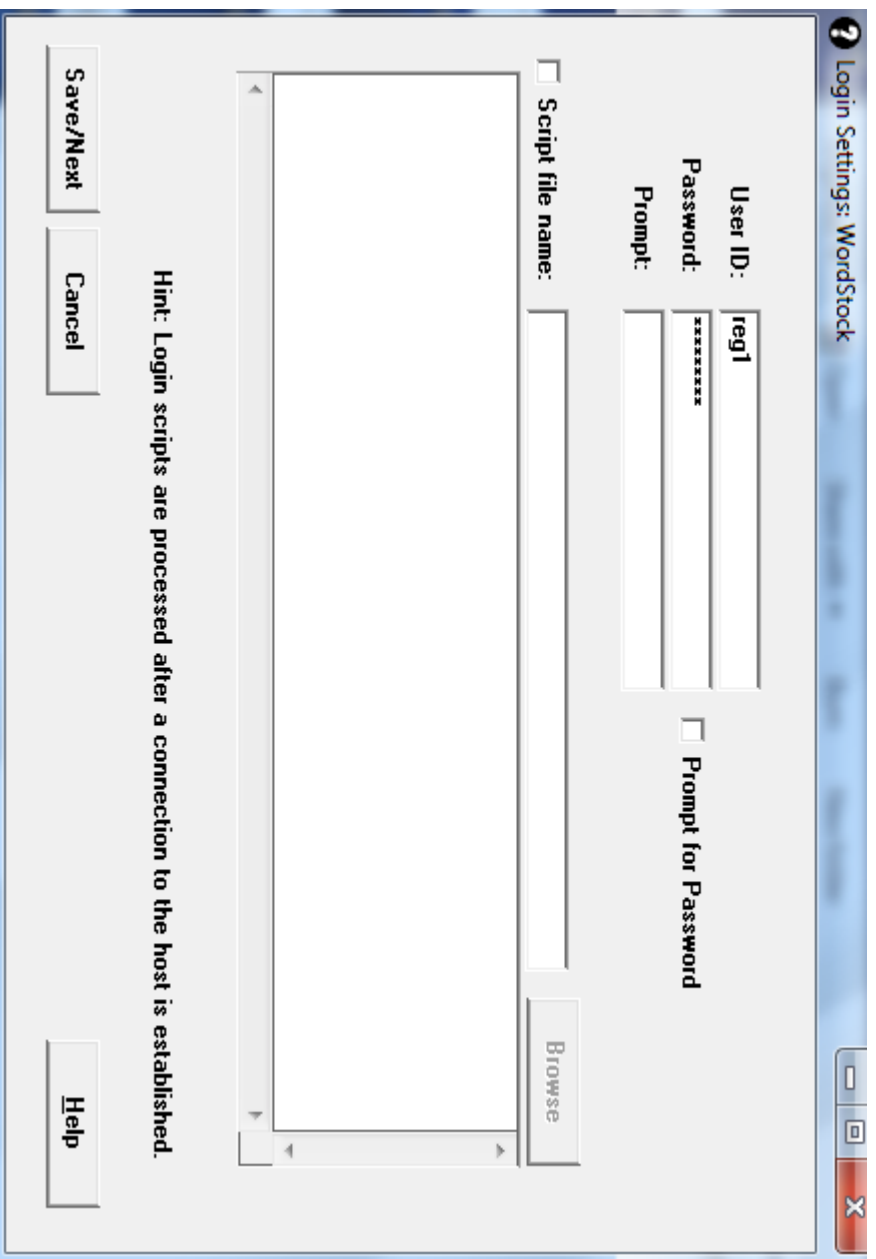
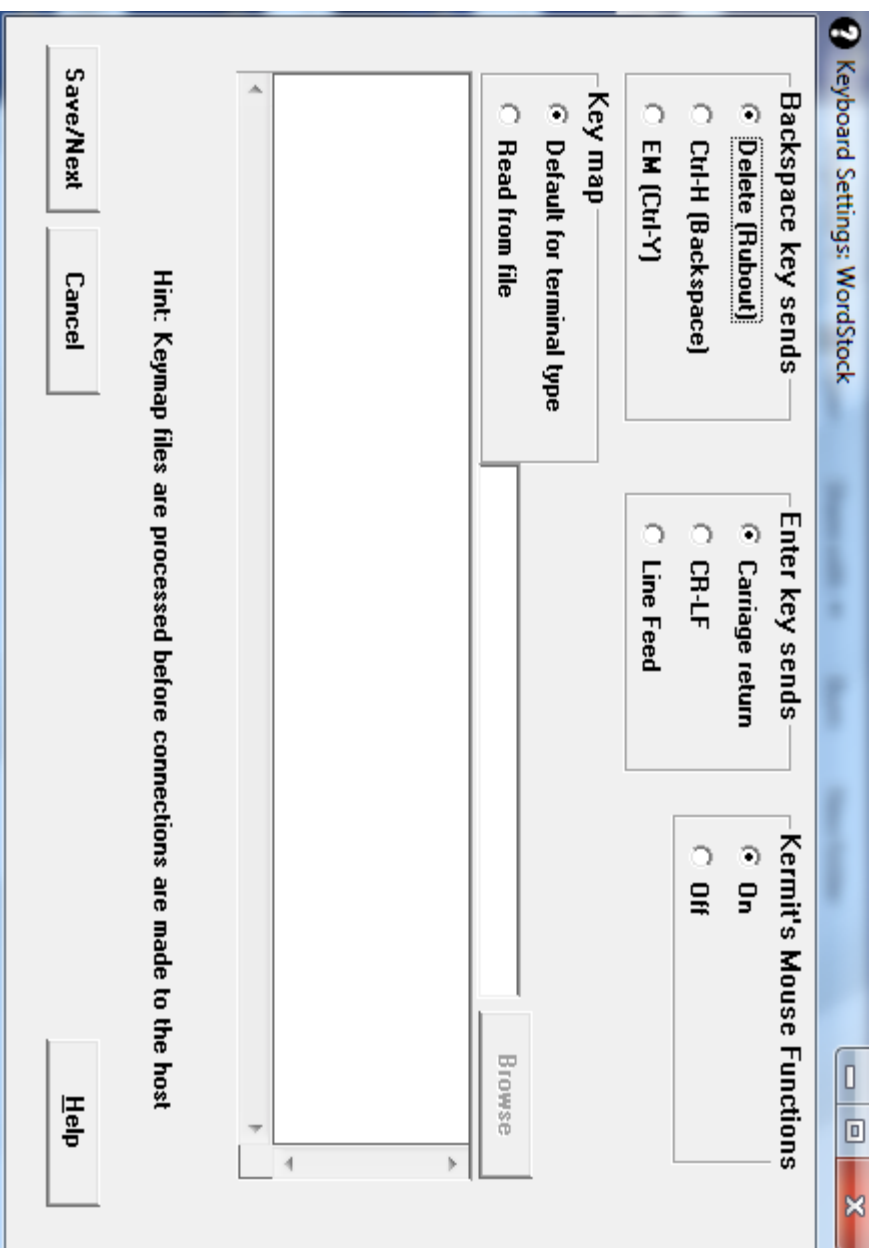
Character Set: QNX Console



The next several pages do not need any changes from the default. Just click 'Save/Next' past each one until you get to 'Login Settings':







## Login settings:

Enter the ID and password to use if you are using SSH, leave blank for Telnet. *WordStock support can supply this information*

The next two pages do not need any changes from the default. Just click 'Save/Next' past each one until you get to 'GUI Settings':

**Printer Settings: WordStock**

Printer Type: Windows Printer Queue

DOS printer device or file name: LPT1:

Windows printer queue name: <default>

Filename for job header page:

Send Form Feed at end of job, or:

End-of-job string:

Timeout: 0 (seconds)

Speed: 9600

Flow Control: None

Parity: None

Character Set: cp437

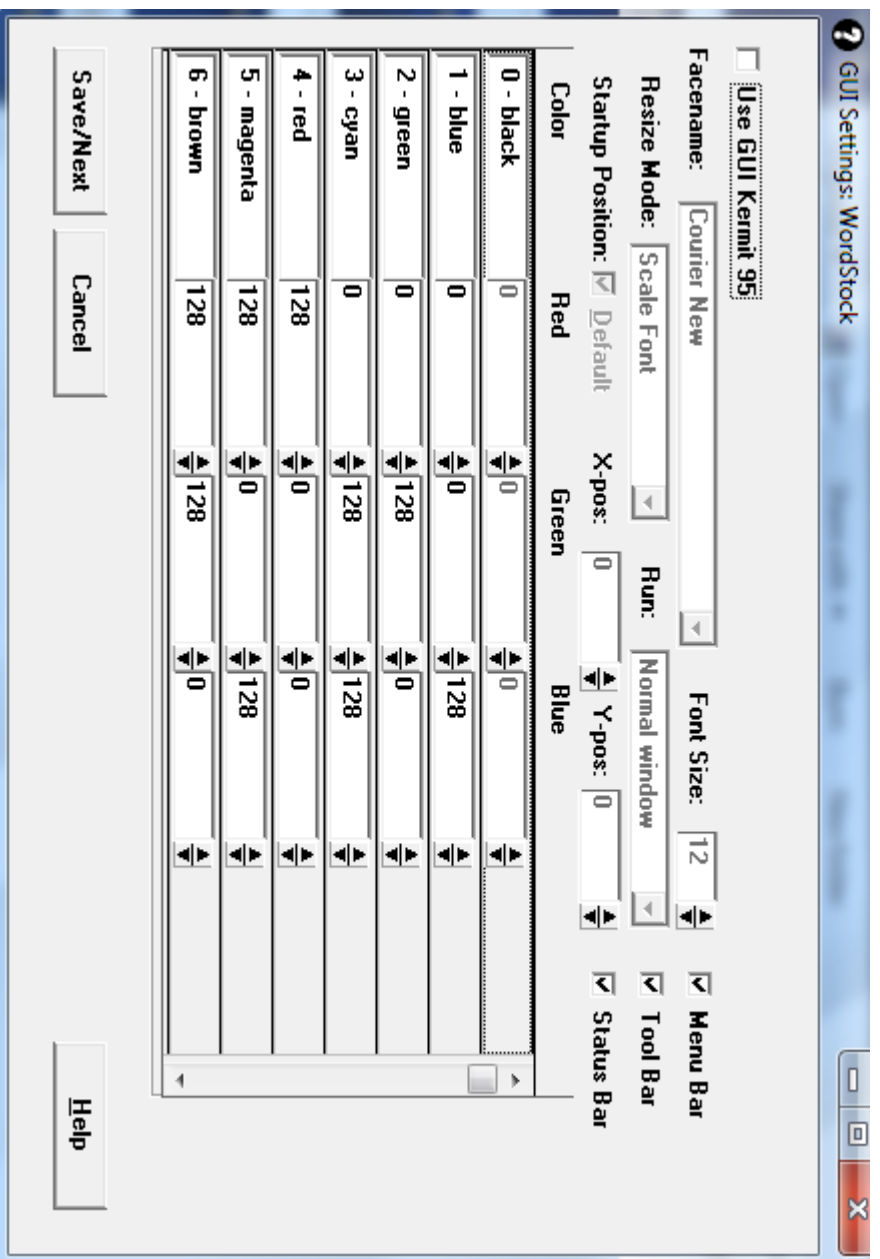
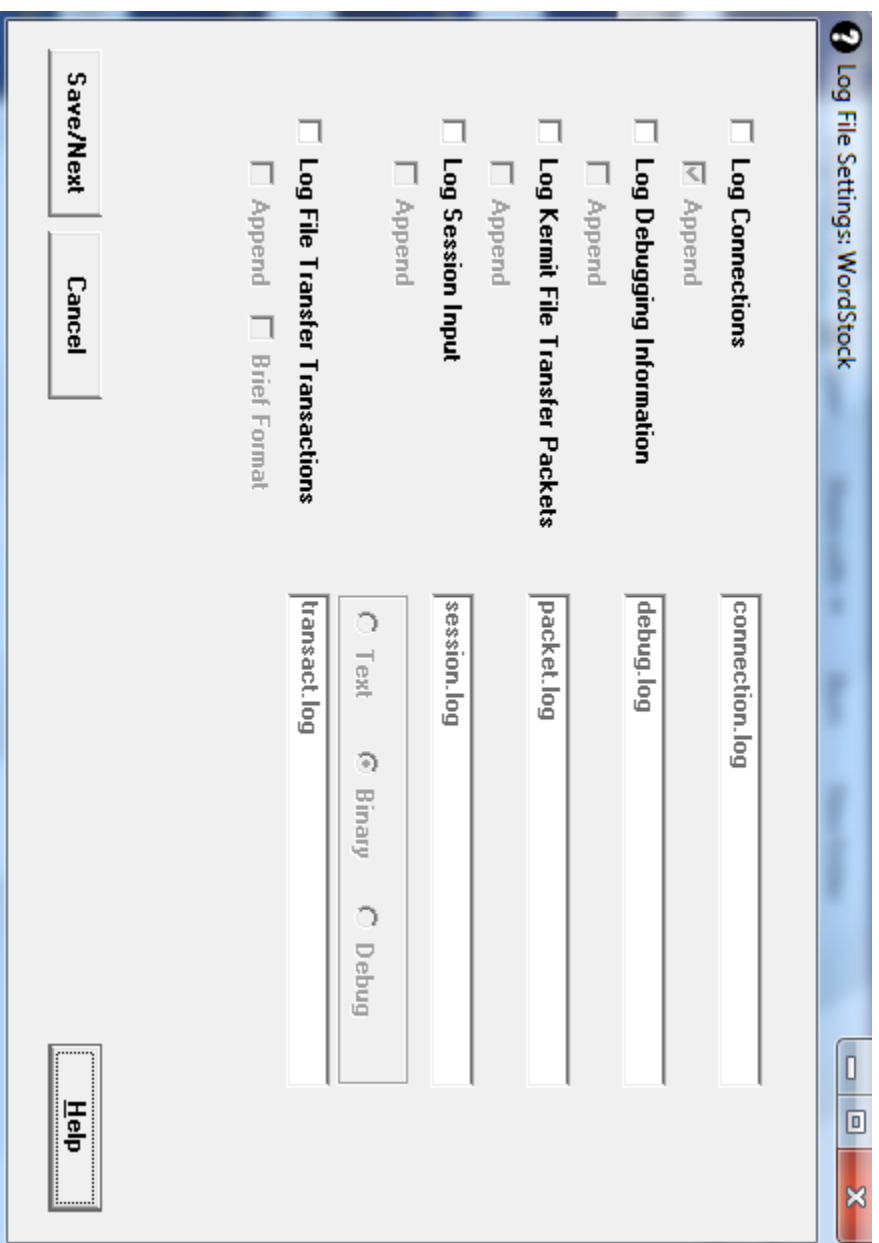
Bidirectional (2-way) printing

Output text as Postscript

Width: 80

Length: 66

Save/Next    Cancel    Help

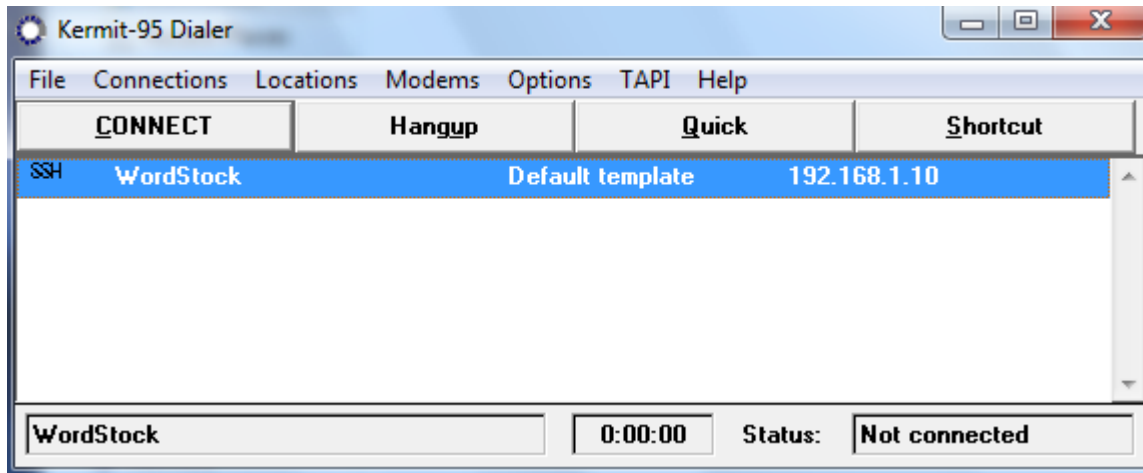




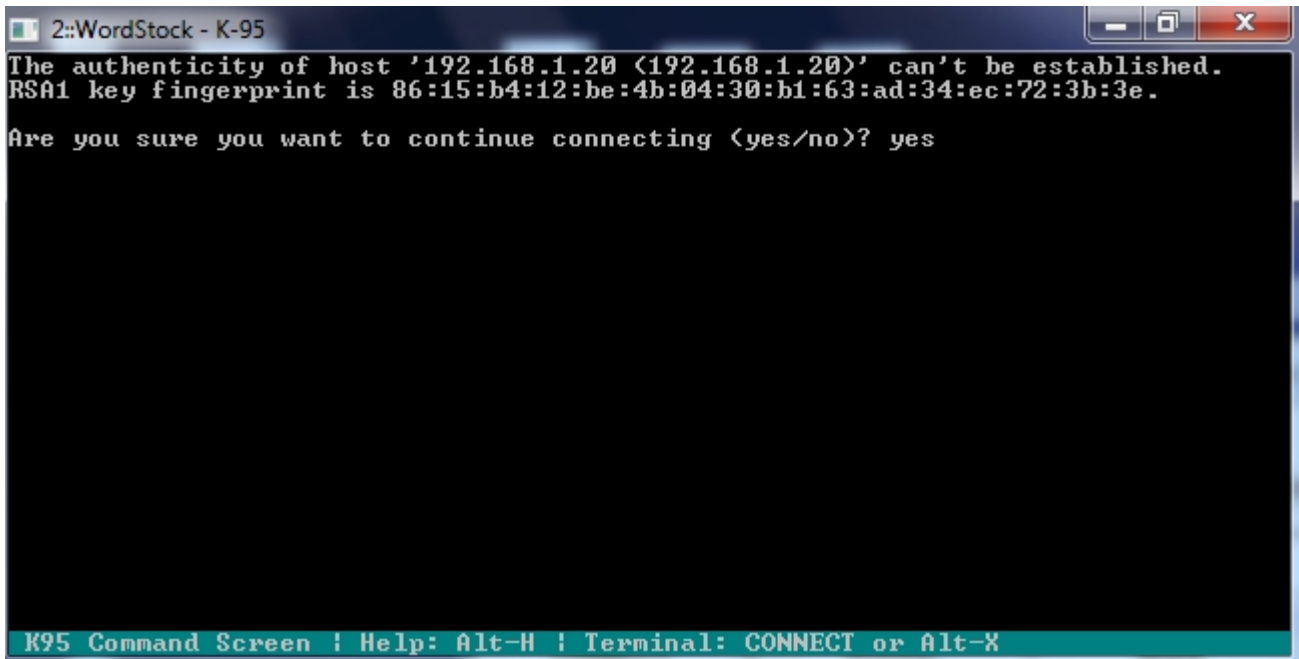
## GUI-settings.tif

Uncheck: Use GUI K95

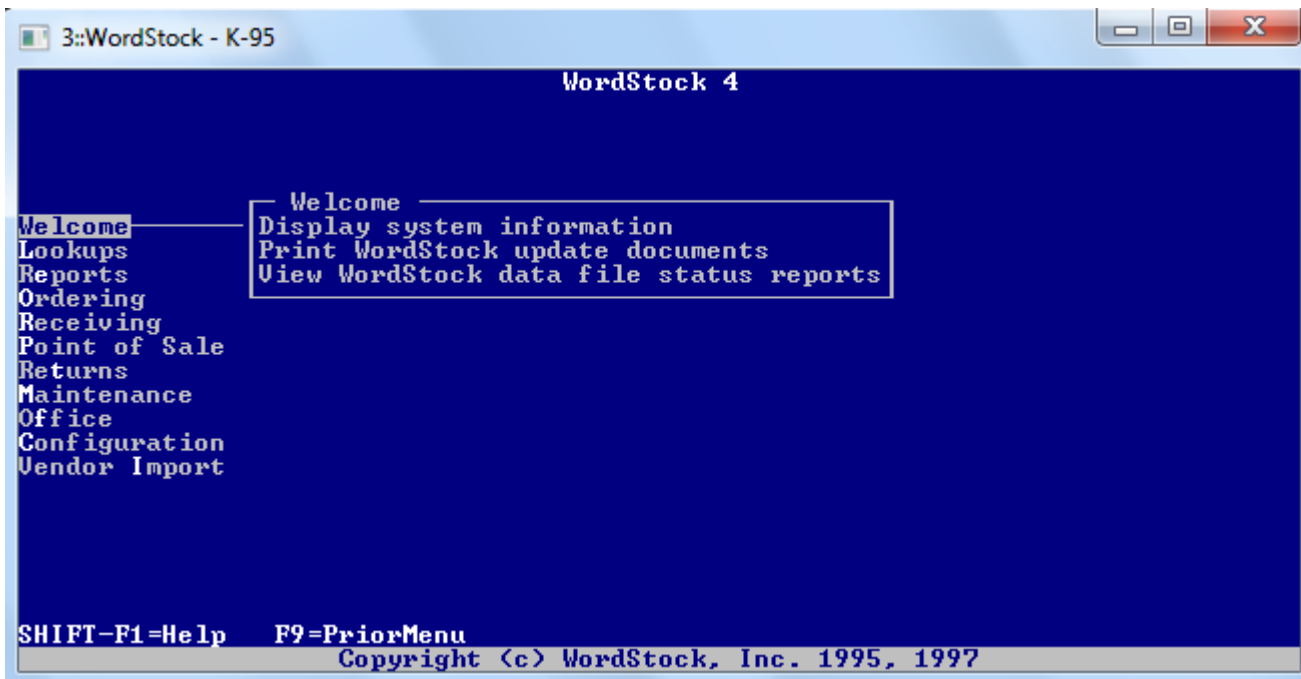
This completes creating the dialer entry. Once you have created the entry, click on 'connect' to make sure it works properly.



The first time you connect, you'll probably see a message that authenticity of the host can't be established, or something similar. This is normal, just type 'yes' to continue.



If you use SSH to connect and entered a user ID and password, you should be connected immediately, without the need for a password. If you use Telnet to connect, you'll receive a login prompt.

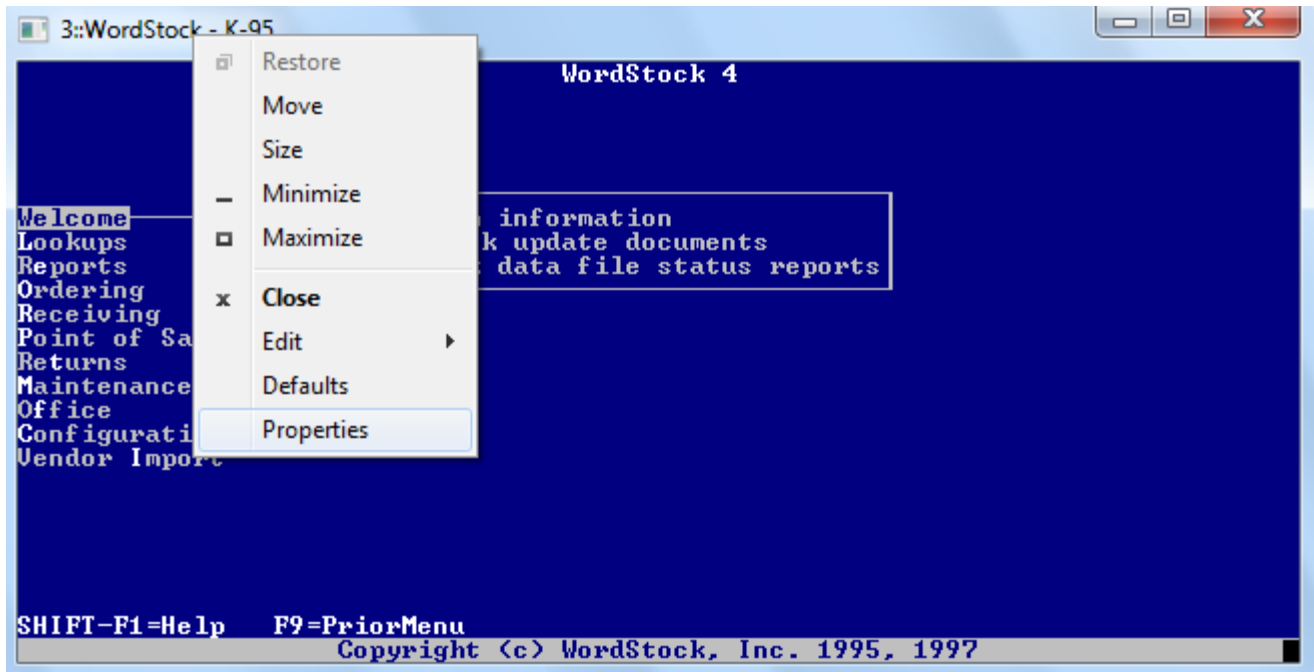


If it doesn't connect, check that the computer is connecting to the internet properly and that all of the above settings are correct. If problems still persist, call WordStock Support.

To create a desktop shortcut and set the proper window size for the connection, click on 'shortcut'. This will create a desktop shortcut with the name of the dialing directory entry.



Click on the shortcut to open a WordStock window, then right-click on the bar on the top of the Kermit/WordStock window which is launched and then click on 'Properties'.



Change settings as follows:

### Font tab:

This controls display size and font. I recommend **Lucida Console 18 pt** as a start for larger monitors, for smaller ones, 14 or 16 may be better. *This setting will vary a lot depending on exactly how your monitor is set up and what size of screen you want.*

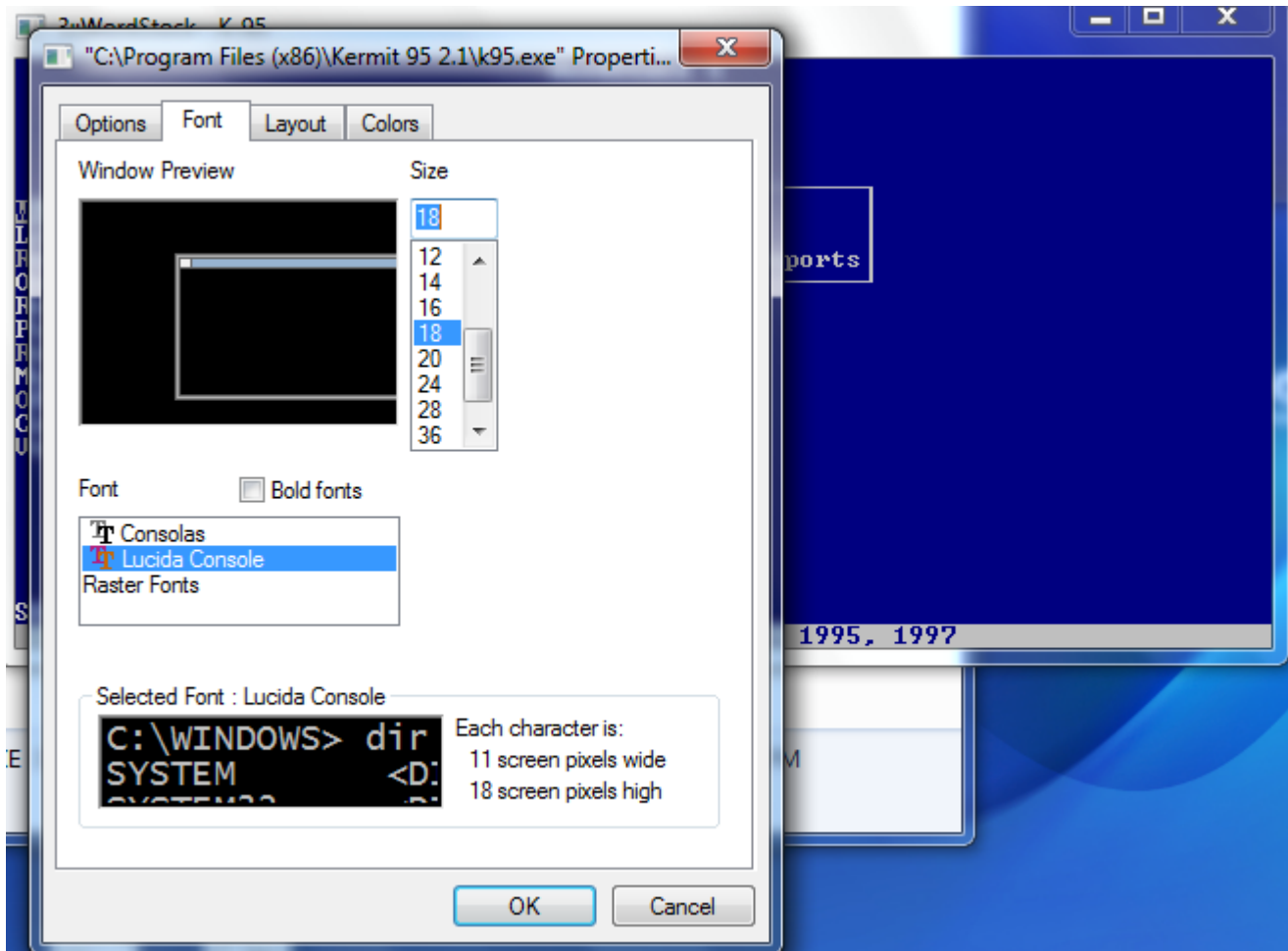
### Options tab:

In Windows XP, in 'Display Options' you can select 'full screen' or 'window' as desired. *In Windows Vista and Windows 7, this capability does not exist, Kermit can only run in a window.*

### Layout tab:

If it's not already at this value, change the 'Window Size' to: **Width: 80, Height: 25**

Click 'OK, then, if you're asked, choose to modify the shortcut which started the session.



**Size-**Test the shortcut to make sure it works properly and that the window is the desired size.