

WordStock Connecting to Windows®

Overview of Kermit

Kermit is a communications program developed by Columbia University to simplify moving information between computers using different operating systems, such as Unix and Windows®.

WordStock uses Kermit as a means of connecting Windows®-based computers to WordStock so that fully-functional WordStock “virtual terminals” can be opened within Windows®.

These virtual terminals can run all WordStock tasks, including POS operations.

Kermit includes a graphical Dialer to configure and launch connections without complicated initialization files or commands. The graphical Dialer, removes the need to interact directly with the command prompt in most cases.

Kermit is launched from the Dialer to make each of your connections automatically with all the appropriate settings. Kermit also includes secure Telnet Connections.

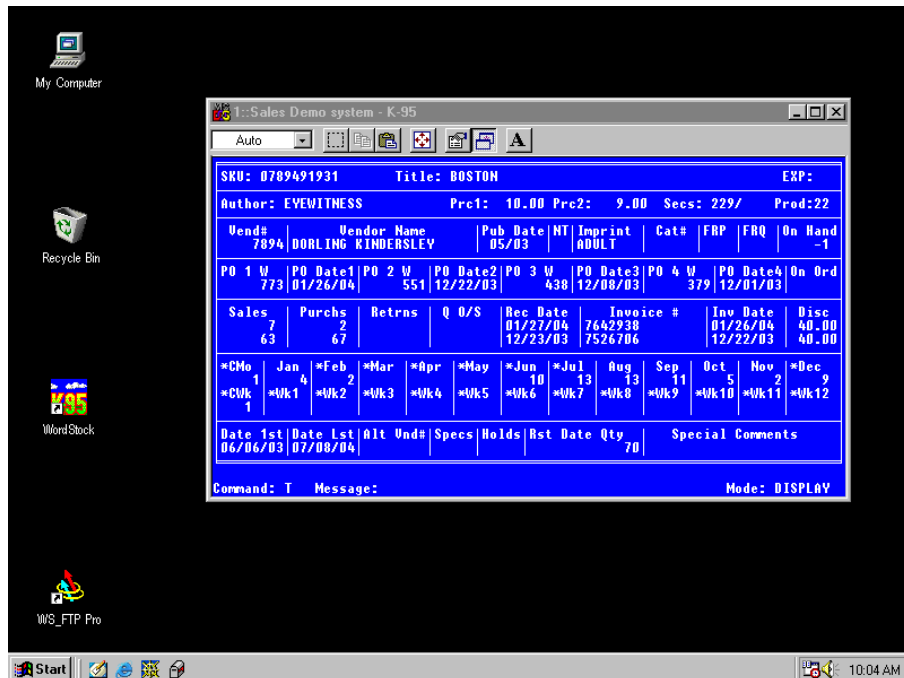


Illustration showing a Windows desktop: clicking the Kermit icon connects to WordStock and enables you to open as many WordStock ‘virtual terminals’ as you’ve licensed

Export Procedure in Brief

From your Windows® computer, click the Kermit icon on the desktop and connect to WordStock.

Once logged into WordStock, select **Export** from the main menu and continue to select **Export to File**.

Enter a name for the file you’re going to export and continue to create a new sort include or select an existing format.

Run the report and WordStock steps you through exporting it.

When the report is completed, connect to WordStock from your Windows computer via WS_FTP and copy the file from WordStock to a directory in your Windows machine.

Once you’ve copied the file to your Windows computer, you can use it in Windows programs, such as Microsoft Word and Excel.

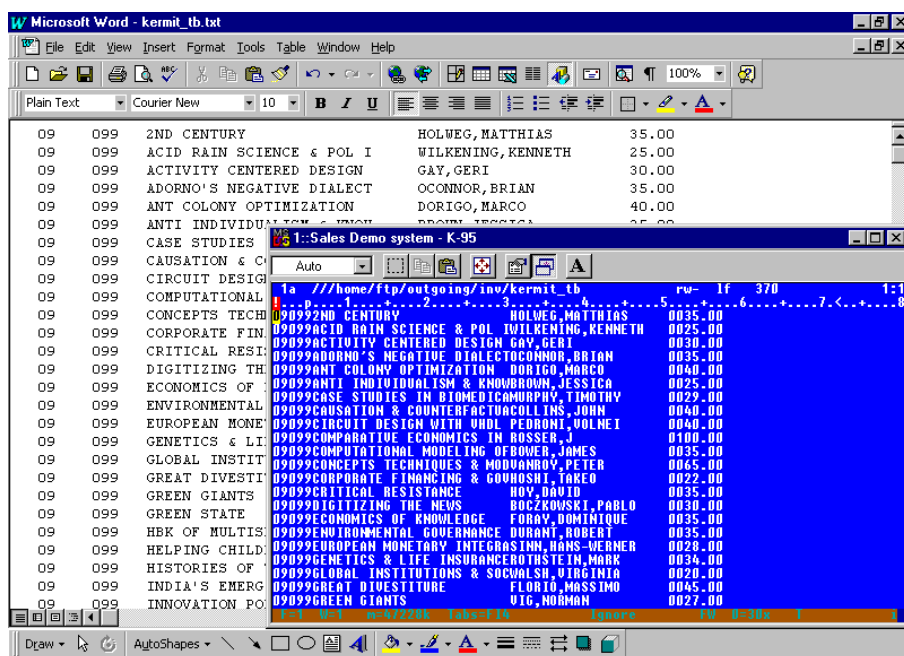


Illustration showing a WordStock report generated from a Windows computer as displayed in a Kermit virtual WordStock terminal. The report is superimposed on the same report once it was exported and opened in Microsoft Word

Kermit for connecting to Microsoft applications

Scenario 1: Ethernet Connection

For maximum speed and stability, you want a permanent, Ethernet connection between your WordStock system and your *Windows*-based computer; you'll need:

3 WordStock 4 Virtual Terminal Licenses	\$25/month
QNX4 TCP/IP & Utilities	<i>included</i>
Kermit Terminal Emulator [32-bit]	<i>included</i>
2 Netgear Ethernet cards	40.00
1 Netgear 8-port 10/100 Ethernet hub	75.00
3 Category-5 Ethernet cables [20' each]	47.85

Scenario 2: Ethernet with Export

In addition to running a WordStock window on a *Windows* computer, as at left, you want to export information from WordStock to a *Windows*-based computer; you'll need:

3 WordStock 4 Virtual Terminal Licenses	\$25/month
QNX4 TCP/IP & Utilities	<i>included</i>
Kermit Terminal Emulator [32-bit]	<i>included</i>
WordStock 4 Export Software	\$10/month
Ipswich WS/FTP	<i>included</i>
2 Netgear Ethernet cards	40.00
1 Netgear 8-port 10/100 Ethernet hub	225.00
3 Category-5 Ethernet cables [20' each]	47.85

